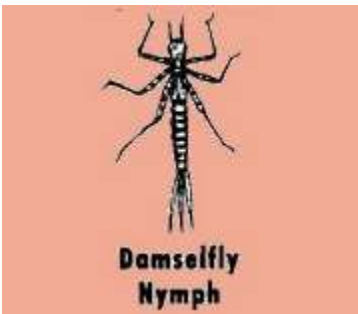




- Amphipods (or scuds)
- Very fast sideways swimmers
 - Look like fuzzy shrimp
 - Seven pairs of legs and they are about one cm long.



- Caddisfly larvae
- Worm-like, soft bodies
 - For protection, they build and live in cases or tubes
 - Cases or tubes are 2-3 cm long and made of different materials, such as twigs, leaves, and sand.



- Damselfly nymphs
- 2-4 cm long
 - Very narrow bodies
 - Three pairs of long spindly legs and three tails.



- Water fleas
- No legs and they are less than one cm long
 - Swim with a jerk using their antennae to help them move.



- Dragonfly nymphs
- Measure from 2-5 cm long
 - Three pairs of legs and no tails
 - Large body that can be brown or green



Mayfly nymphs

- About 2.5 cm long
- Three pairs of legs with one claw at the end of each leg
- Three long, slim tails
- Usually black, but some may be green, brown, or gray



Midge Larva

Midge larvae

- About 1.5 cm in length
- Look like worms, except for the twist-like pattern on their bodies
- Can be red, green, or tan
- Very thin and they wiggle a lot when they are taken out of water.



Mosquito Larva

Mosquito larvae

- No legs
- Have tentacles, brushes, and tails
- Move in S-shaped curves



Snail

Pond snails

- Soft-bodied animals with a single spiral shell, often opening on the left.
- Have an operculum (a plate door that protects the opening of shell)
- About 2 cm long



Bristle Worm

Bristle Worm (one kind of pond worm)

- May be with or without hair
- Moves by stretching and pulling their bodies along, just as earthworms do.
- Record the total number of all worms you find